

# Albert Carriere

## APARTMENTS



### Features

- Basketball Court
- Cable-Ready
- Close to North Country Golf Club
- Close to Public Transportation
- Energy-Efficient Appliances
- 24-Hour Emergency Maintenance Staff
- State-of-the-Art Laundry Facilities
- Off-Street Parking
- Fun-Filled Playground
- Spacious Closets
- Featured Accent Wall
- Wall-to-Wall Carpeting

### Deposit

Call for Details.

### Education

Rouses Point Elementary School  
Northeastern Clinton Central School  
(Regional Middle School and High School)

### Community

North Country Golf Club / Full-Service  
Marinas / Rouses Point Civic Center /  
San Marino, Lakeside Coffee, Sandy's Deli

### Location

Rouses Point, located off of Rt. 11 and close to I-87, is a small village on the shores of Lake Champlain, and offers an array of historical attractions, shopping and dining, events, festivals, and endless outdoor recreation. From the west, use Rt. 11 east to Lake Street. From the east, use Rt. 2 to cross into New York in the Rouses Point Bridge and turn left onto Lake Street. From the south, use I-87 north to exit 42 and take Rt. 11 east to Rouses Point. From the north, use I-87 directions above to exit 42, or take Route 223 south in Canada to the U.S. Border and continue into Rouses Point.

### Albert Carriere Apartments

4 Carriere Way

Rouses Point, NY 12979

Phone: (518) 297-6911

Fax: (518) 297-2366

[www.hmrproperties.com](http://www.hmrproperties.com)

[albertca@hmrproperties.com](mailto:albertca@hmrproperties.com)

### Office Hours:

Monday - Friday,

7:30 AM - 4:00 PM

Saturday and Sunday

by Appointment



Housing Management Resources



[www.facebook.com](http://www.facebook.com)

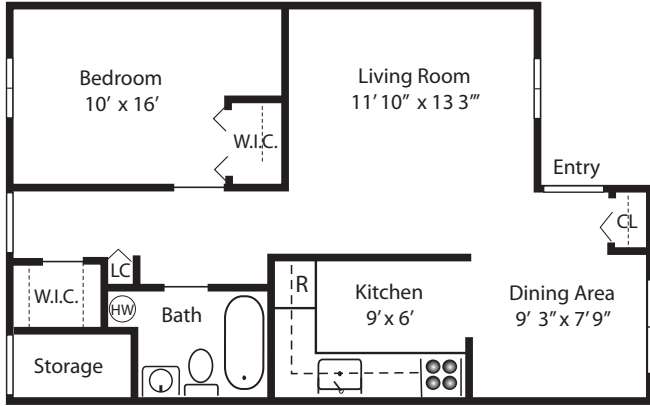


\*Restrictions may apply.

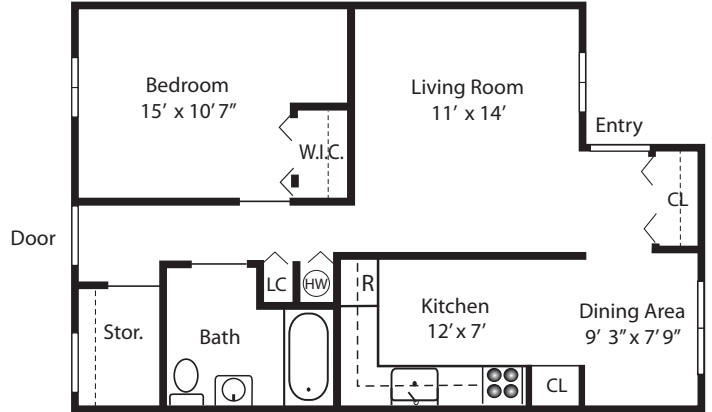


# Albert Carriere

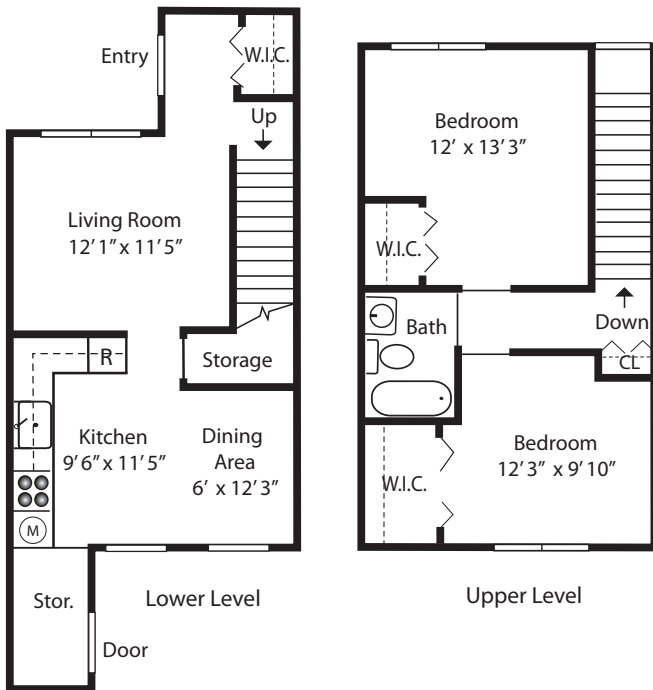
APARTMENTS



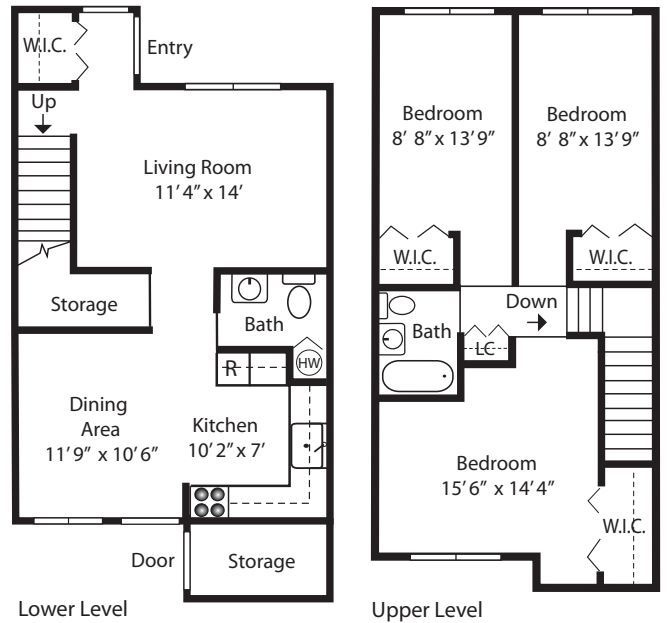
ONE BEDROOM 620 Sq. Ft.



ONE BEDROOM 714 Sq. Ft.



TWO BEDROOM 932 Sq. Ft.



THREE BEDROOM 1164 Sq. Ft.

