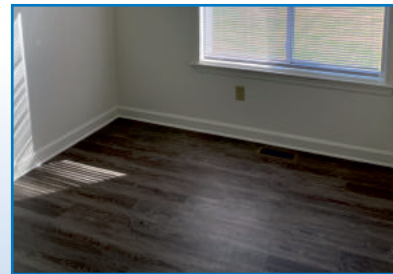
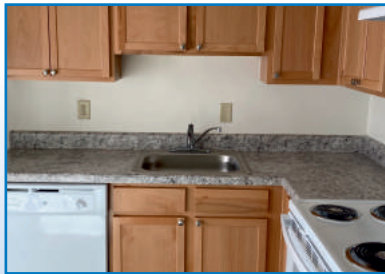
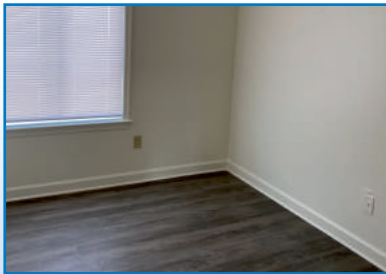


Newport Harbour

APARTMENTS



Newport Harbour Apartments offers one, two, three and four bedroom apartment homes. Our "Working Family Preference" means that a family with at least 1 working member (or if the head, co-head, or sole member is age 62 or older, or is a disabled person) will be given preference over all other nonworking applicants. Call today for details!

Features

- Cable-Ready
- Close to Parks and Recreation
- Close to Public Transportation
- Custom Blinds
- Energy-Efficient Appliances
- 24-Hour Emergency Maintenance Staff
- State-of-the-Art Laundry Facilities
- Off-Street Parking
- Neighborhood Network Center
- Spacious Closets
- Utilities Included (except Electricity)
- Dishwasher

Requirement

Income Restrictions Apply
Rent Based on Household Income

Education

John Marshall Elementary School
Booker T. Washington Middle School
Heritage High School

Community

Boys and Girls Club /
Martin Luther King Plaza /
East End Shopping Center /
Southeast Shopping Center

Location

From the south, take I-664, going north, and take exit 6 to merge onto 25th Street/ Martin L. King, Jr. Way. Then, turn right onto Madison Avenue.

From the north, take I-64, going east, and take exit 264 to merge onto I-664, going south, toward Downtown Newport News/ Chesapeake/Suffolk; then, take exit 6 for 26th Street/27th Street, and merge onto 27th Street, turn right onto Jefferson Avenue. Then, turn left at the second cross street onto 25th Street/Martin L. King, Jr. Way, and right onto Madison Avenue.

Newport Harbour Apartments

2325 Madison Ave
Newport News, Virginia 23607
Phone: (757) 247-0303
Fax: (757) 245-5270

www.hmrproperties.com

newportharbour@hmrproperties.com

Office Hours:

Monday - Friday,
10:00 AM - 5:00 PM
Saturday and Sunday
by Appointment



Proud to use and provide residents with plant based cleaning products!



Housing Management Resources



www.facebook.com



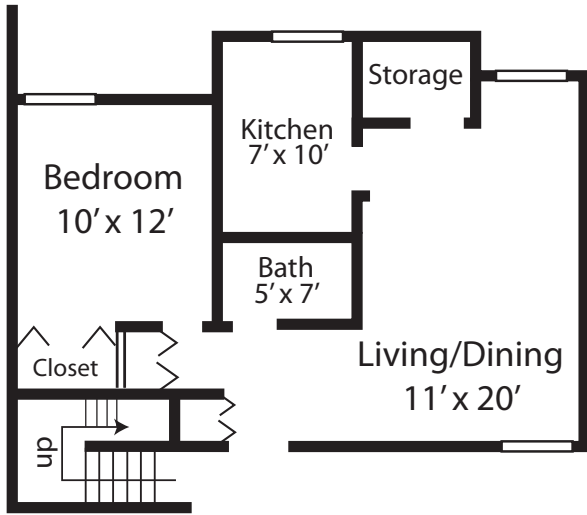
*Restrictions may apply.



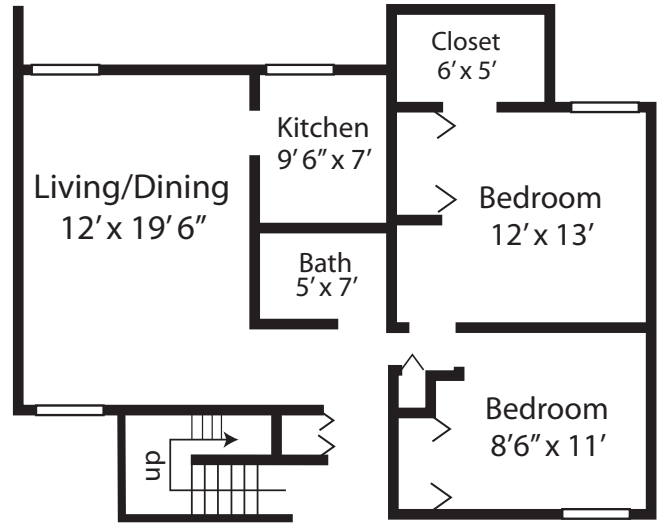
Newport Harbour

APARTMENTS

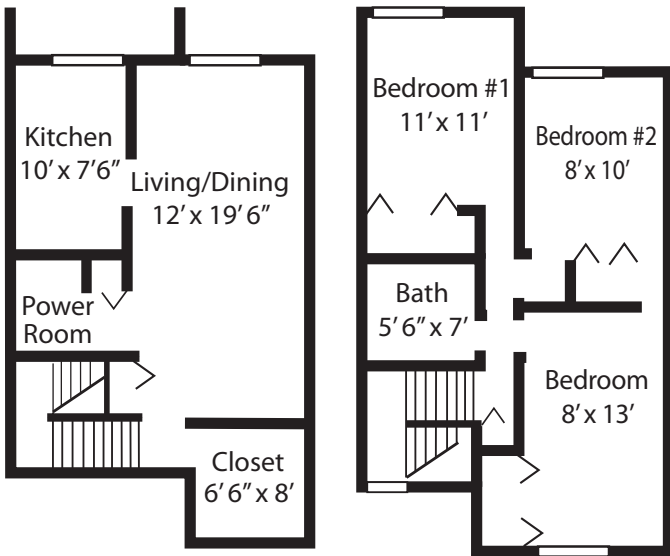
ONE BEDROOM



TWO BEDROOM



THREE BEDROOM



FOUR BEDROOM

